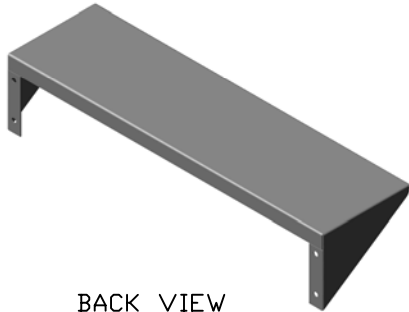
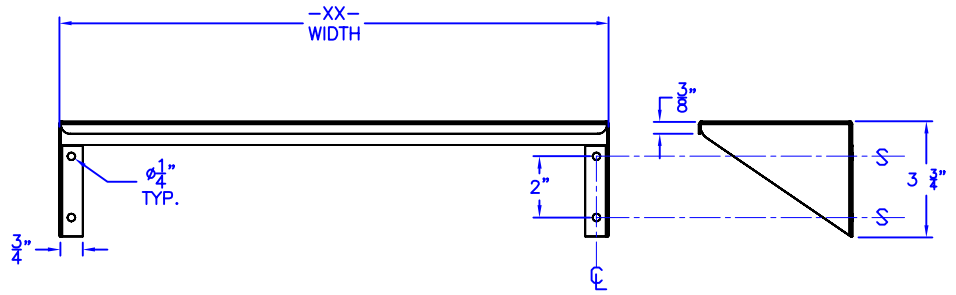
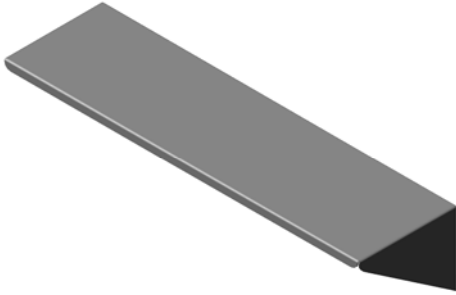




Technical Data

K-4031-XX-SS

5 IN. DEEP EXPOSED MOUNT SHLEF



BACK VIEW

PART NUMBER	SHELF WIDTH
-XX-	
K-4031-16-SS	16"
K-4031-18-SS	18"
K-4031-24-SS	24"

CUSTOM SHELF DEPTH AND WIDTH IS AVAILABLE UPON REQUEST. CALL FOR PRICING AND AVAILABILITY.

Construction:

- 18 GAUGE TYPE 304 STAINLESS STEEL
- ONE PIECE CONSTRUCTION WITH INTEGRAL SIDE BRACKETS WITH 1/4" MOUNTING HOLES
- SATIN #4 FINISH
- 3/8" FRONT LIP

Installation:

USE SHELF AS TEMPLATE TO LOCATE AND MARK MOUNTING HOLES. DRILL HOLES AND FASTEN SHELF TO WALL USING (4) MOUNTING HOLES PROVIDED.

SCREWS AND WALL ANCHORS ARE NOT PROVIDED.

CAUTION: SHELF IS ONLY AS STRONG AS THE ANCHORING DEVICES AND THE WALL ON WHICH IT IS MOUNTED TO.

Guide Specification:

5 IN. DEEP X 18 GAUGE TYPE 304 STAINLESS STEEL SHELF. ONE PIECE CONSTRUCTION WITH INTEGRAL SIDE BRACKETS. PART NUMBER AND WIDTHS AS INDICATED. SATIN #4 FINISH.